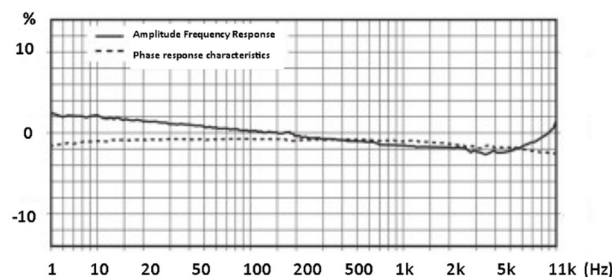
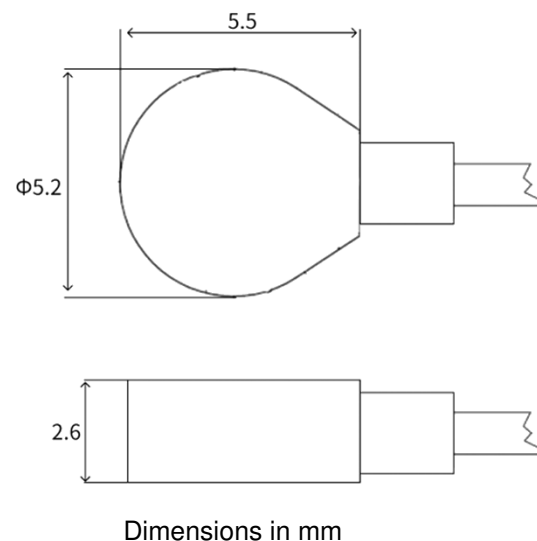


- Teardrop miniature IEPE Accelerometer
- Shear design
- Piezoelectric ceramic PZT-5
- Sensitivity – 20mV/g
- Mass – 0.35grams
- 0.5m Integral cable
- Adhesive Mount

The XV20S-A is an ultra miniature monoaxial teardrop IEPE accelerometer with a side entry integral cable and a flat base for adhesive mounting. Featuring a shear design PZT-5 sensing element the XV20S-A provides high accuracy with wide bandwidth up to 12kHz. The extremely small size and low mass means the XV20S-A is almost invisible in terms of mass loading effects.

Specification	Metric	Imperial
Sensitivity	2.04mV/(m/s <sup>2</sup> )	20mV/g
Measurement Range (pk)	±2450m/s <sup>2</sup>	±250g
Frequency Range ±10%	1.0 to 12000 Hz	
Resonant Frequency	≥50 kHz	
Non-Linearity	≤1 %	
Transverse Sensitivity	≤5 %	
Electrical Noise Floor	0.01m/s <sup>2</sup> rms	0.001g rms
Overload Limit (Shock)	±19,600(m/s <sup>2</sup> )pk	±2000gpk
Operating Temp. Range	-55 to +200°C	-67 to +392°F
Polarity ↑	Positive	
Compliance Voltage (Supply)	+18 to +28 VDC	
Current range	2 – 20mA	
Output Bias Voltage	11VDC ± 1.5VDC	
Size (excluding connector)	5.2x5.5x2.6 (mm)	0.20x0.21x0.10 (in)
Weight	0.35gm	0.01oz
Sensing Geometry	Shear	
Sensing Element Material	PZT-5	
Case Material	Titanium	
Connector Position	Side	
Case sealing	Laser Welded	
Electrical Connection Type	0.5m Integral cable to 10/32UNF Mdot socket	
Mounting	Flat base for adhesive mounting	



Kemo has a range of extension cable assemblies available for use with the XV20S-A

- 1B2-30 – 3m(10ft) 10/32UNF microdot plug to BNC plug
- 1B2-50 – 5m(15ft) 10/32UNF microdot plug to BNC plug
- 1B1-30 – 3m(10ft) 10/32UNF mdot plug to 10/32UNF mdot plug
- 1B1-50 – 5m(15ft) 10/32UNF mdot plug to 10/32UNF mdot plug