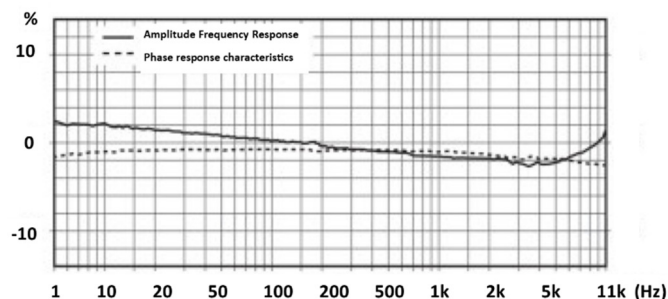
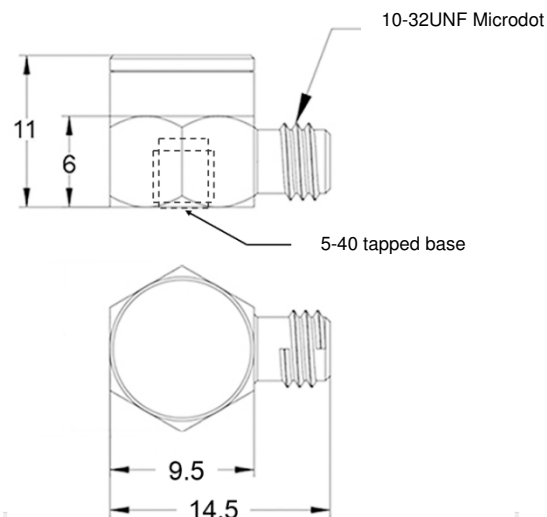


- Miniature cube IEPE Accelerometer
- Shear design
- Piezoelectric ceramic PZT-5
- Sensitivity – 5mV/g
- Mass – 3.2grams
- 10/32UNF side entry connector
- Tapped base mount

The MV5S-T is a miniature monoaxial IEPE accelerometer with a side entry 10/32UNF microdot connector and a tapped base for stud mounting or adhesive mounting using one of Kemo's range of mounting bases. Featuring a shear design PZT-5 sensing element the MV5S-T provides high accuracy with wide bandwidth up to 10kHz

| Specification               | Metric                      | Imperial      |
|-----------------------------|-----------------------------|---------------|
| Sensitivity                 | 0.51mV/(m/s <sup>2</sup> )  | 5mV/g         |
| Measurement Range (pk)      | ±9800m/s <sup>2</sup>       | ±1000g        |
| Frequency Range ±10%        | 1 to 10000 Hz               |               |
| Resonant Frequency          | ≥60 kHz                     |               |
| Non-Linearity               | ≤1 %                        |               |
| Transverse Sensitivity      | ≤5 %                        |               |
| Electrical Noise Floor      | 0.01m/s <sup>2</sup> rms    | 0.001g rms    |
| Overload Limit (Shock)      | ±49000(m/s <sup>2</sup> )pk | ±5000gpk      |
| Operating Temp. Range       | -55 to +125°C               | -67 to +257°F |
| Polarity ↑                  | Positive                    |               |
| Compliance Voltage (Supply) | +18 to +28 VDC              |               |
| Current range               | 2 – 20mA                    |               |
| Output Bias Voltage         | 11VDC ± 1.5VDC              |               |
| Size (excluding connector)  | 9.5x11mm                    | 0.37"x0.43"   |
| Weight                      | 3.2gm                       | 0.11oz        |
| Sensing Geometry            | Shear                       |               |
| Sensing Element Material    | PZT-5                       |               |
| Case Material               | Titanium                    |               |
| Connector Position          | Side                        |               |
| Case sealing                | Laser Welding               |               |
| Electrical Connection Type  | 10/32UNF Microdot           |               |
| Mounting                    | 5-40UNC tapped base         |               |



Kemo has a range of cable assemblies available for use with the MV5S-T and other IEPE accelerometers.

- 1B2-30 – 3m(10ft) 10/32UNF microdot to BNC plug
- 1B2-50 – 5m(15ft) 10/32UNF microdot to BNC plug
- 1B1-30 – 3m(10ft) 10/32UNF mdot to 10/32UNFmdot
- 1B1-50 – 5m(15ft) 10/32UNF mdot to 10/32UNFmdot

### Kemo Limited

First Floor, 33 King Street, Theford, Norfolk, IP24 2AW, United Kingdom  
+44 (0)1474 705168

[www.kemo.com](http://www.kemo.com) [sales@kemo.com](mailto:sales@kemo.com)