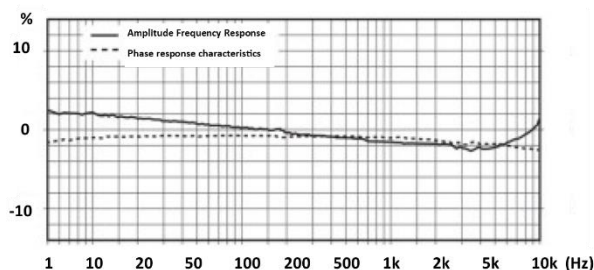
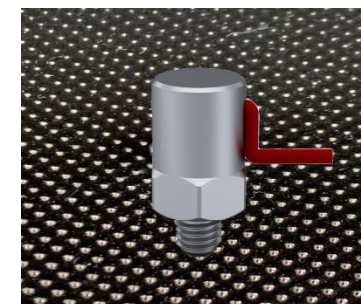
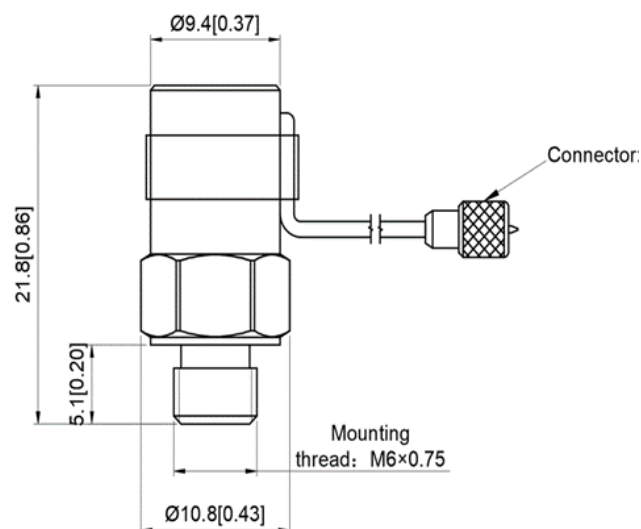


- Shock IEPE Accelerometer
- Shear design
- Piezoelectric ceramic PZT-5
- Range ±20000g
- Mass – 5.5grams
- 0.5m int. cable with 10/32 Mdot plug
- M6 x 0.75 integral stud

The VS-20K is an IEPE shock accelerometer offering dedicated shock measurement capability. With a ±20000g range the VS-20K combines the flexibility of IEPE (Integrated Electronics Piezoelectric) technology with the reliability of a robust titanium fully welded construction.

Kemo can also offer cables and signal conditioning solutions for use with their full range of accelerometers.

Specification	Metric	Imperial
Sensitivity	0.0255mV/(m/s ²)	0.25mV/g
Measurement Range (pk)	±196000m/s ²	±20000g
Frequency Range ±10%	1 to 10000 Hz	
Resonant Frequency	≥30 kHz	
Non-Linearity	≤1 %	
Transverse Sensitivity	≤5 %	
Overload Limit (Shock)	±245,000(m/s ²)pk	±25000gpk
Operating Temp. Range	-40 to +85°C	-40 to +185°F
Polarity ↑	Positive	
Isolation	Case isolated	
Compliance Voltage (Supply)	+18 to +28 VDC	
Current range	2 – 10mA	
Output Bias Voltage	11VDC ± 1.5VDC	
Output Impedance	≤100Ω	
Size (excluding connector)	10.8mmA/Fx16.7 mm	0.43"A/Fx0.66"
Weight	5.5gm	0.19oz
Sensing Geometry	Shear	
Sensing Element Material	PZT-5	
Case Material	Titanium	
Connector Position	0.5m Int. cable with 10/32UNF Microdot Plug	
Case sealing	Hermetic	
Electrical Connection Type	10-32UNF Microdot plug	
Mounting	M6 x 0.75 integral stud	



Kemo has a range of cable assemblies available for use with the VS-20K and other IEPE accelerometers.

1B2-30 – 3m(10ft) 10/32UNF microdot to BNC plug
 1B2-50 – 5m(15ft) 10/32UNF microdot to BNC plug
 1B1-30 – 3m(10ft) 10/32UNFmdot to 10/32UNFmdot
 1B1-50 – 5m(15ft) 10/32UNFmdot to 10/32UNFmdot

Kemo Limited

First Floor, 33 King Street, Thetford, Norfolk, IP24 2AW, United Kingdom
 +44 (0)1474 705168

www.kemo.com sales@kemo.com

Iss.1 – March 2023