

- General purpose IEPE Hammer
- Range 20000N
- Sensitivity 0.25mV/N
- Kit includes impact tips and 2m cable
- BNC connector
- Carry case included

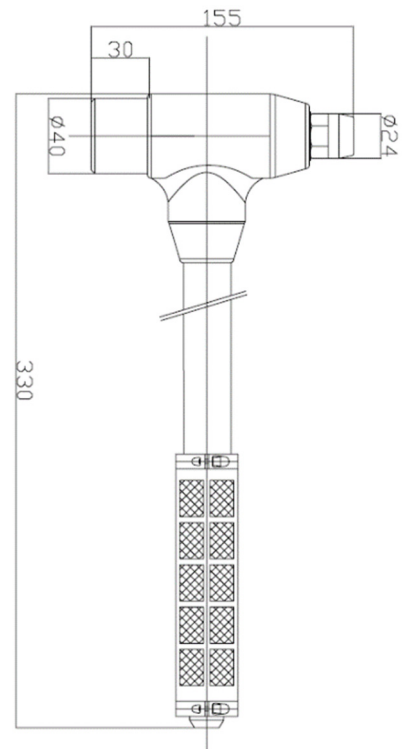


The VTH20KN is the middle of our range of heavyweight general purpose IEPE impact hammers.

It is suited to the testing of large heavyweight structures that require a much greater level of force to excite the structure.

The hammer is supplied in a carry case and also includes a 2m cable with a BNC plug termination. In addition 3 impact tips:

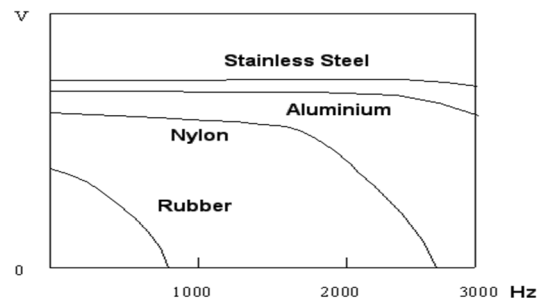
- Soft
- Medium
- Hard



Typical comparative frequency response

Pulse width and frequency response vary with hammerhead materials.

This drawing is for reference only



VTH20KN	Metric	Imperial
Sensitivity ($\pm 10\%$)	0.25mV/N	1.12mV/lbf
Measuring Range	20000N	4496.2.1lbf
Non-linearity	$\leq 1\%$	
Resolution	450mN(rms)	
Resonant Frequency	$\geq 45\text{kHz}$	
Hammer head Weight	445gm	15.7oz
Hammer weight (total)	920g	32.45oz
Hammer Head \varnothing	40mm	1.57in
Hammer Length	330mm	13in
Output Connector	BNC	
Tips Supplied	Soft, medium, hard	
Excitation voltage	+18 to +28V	
Constant Current	2-10mA	
Bias voltage	10-14VDC	
Output Impedance	$\leq 100\Omega$	

Due to continued product development Kemo Limited reserve the right to change specification without notice.