

- General purpose IEPE Hammer
- Range 10000N
- Sensitivity 0.5mV/N
- Kit includes impact tips and 2m cable
- BNC Microdot connector
- Carry case included

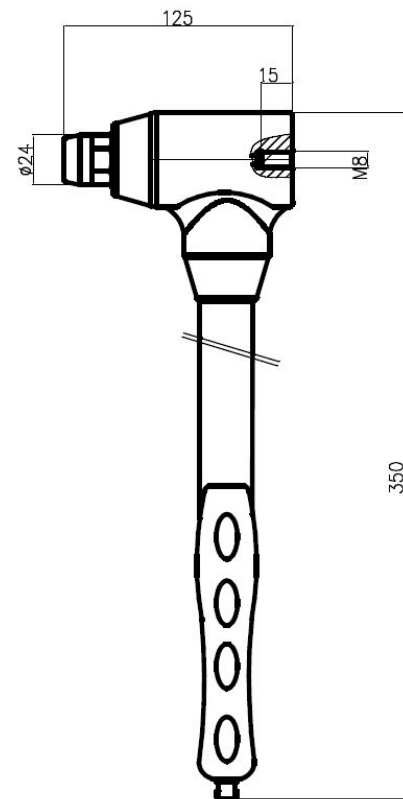


The VTH10KN is the first of the heavy duty general purpose impact hammers, offering an increase in size, weight and force.

Suited to the testing and excitation of larger heavier structures.

The hammer is supplied in a carry case and also includes a 2m cable with a BNC plug termination. In addition 3 impact tips:

- Soft
- Medium
- Hard

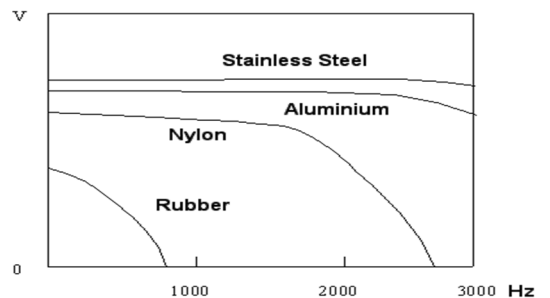


VTH10KN	Metric	Imperial
Sensitivity ($\pm 10\%$)	0.5mV/N	2.23mV/lbf
Measuring Range	10000N	2248.1lbf
Non-linearity	$\leq 1\%$	
Resolution	250mN(rms)	
Resonant Frequency	$\geq 45\text{kHz}$	
Hammer head Weight	445gm	15.7oz
Hammer weight (total)	920g	32.45oz
Hammer Head \varnothing	32mm	1.26in
Hammer Length	350mm	13.38in
Output Connector	BNC	
Tips Supplied	Soft, medium, hard	
Excitation voltage	+18 to +28V	
Constant Current	2-10mA	
Bias voltage	10-14VDC	
Output Impedance	$\leq 100\Omega$	

Typical comparative frequency response

Pulse width and frequency response vary with hammerhead materials.

This drawing is for reference only



Due to continued product development Kemo Limited reserve the right to change specification without notice.